



Self Priming Centrifugal Pump

Model 03H1-HYD

Size 3" x 3"

PUMP SPECIFICATIONS

Size: 3" x 3" (76 mm x 76 mm) NPT - Female.

Casing: Aluminum Alloy 356-T6.

Maximum Operating Pressure 137 psi (945 kPa).*

Enclosed Type, Five Vane Impeller: Aluminum Alloy 356-T6.

Handles 7/16" (11,1 mm) Diameter Spherical Solids.

Impeller Shaft: Alloy Steel 8620H.

Shaft Sleeve: Alloy Steel 4130.

Replaceable Wear Rings: Copper Alloy C93200.

Intermediate: Aluminum Alloy 356-T6.

Flanges: Aluminum Alloy 356-T6.

Gaskets: Cork ^w/Nitrile.

O-Rings: Buna-N.

Hardware: Standard Plated Steel.

Optional Equipment: Victaulic[®] Suction and Discharge Flanges.

Horizontal Victaulic[®] Discharge Flange.

Victaulic is a Registered Trademark of Victaulic Company of America.



HYDRAULIC MOTOR SPECIFICATIONS

Maximum Input Pressure: 3000 psi (20684 kPa).

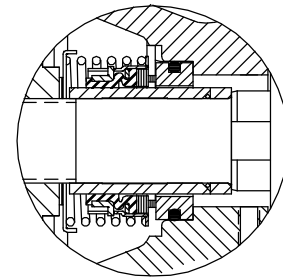
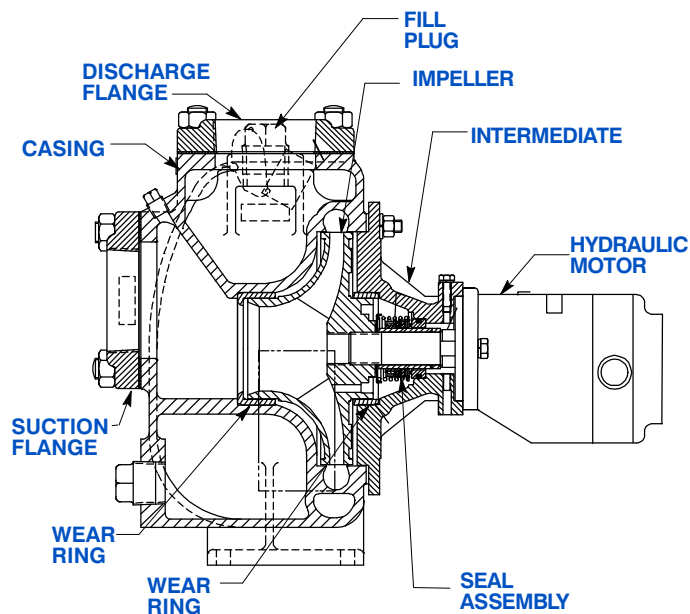
Maximum Input Flow: 29 GPM (1,8 lps).

Maximum Hydraulic Fluid Temperature: 180°F (82°C).

Bearings: Roller Type.

Port Size: 1-1/16-12 UN-2B Straight Thread (SAE #12).

**Consult Factory for Applications Exceeding Maximum Pressure and/or Temperature Indicated.*



SEAL DETAIL

Type 2, Mechanical, Self-Lubricated. Carbon Rotating Face. Ni-Resist Stationary Face. Fluorocarbon Elastomers (DuPont Viton[®] or Equivalent). Stainless Steel 18-8 Cage and Spring. Maximum Temperature of Liquid Pumped, 160°F (71°C).*



THE GORMAN-RUPP COMPANY • MANSFIELD, OHIO

GORMAN-RUPP OF CANADA LIMITED • ST. THOMAS, ONTARIO, CANADA

www.grpumps.com

Specifications Subject to Change Without Notice

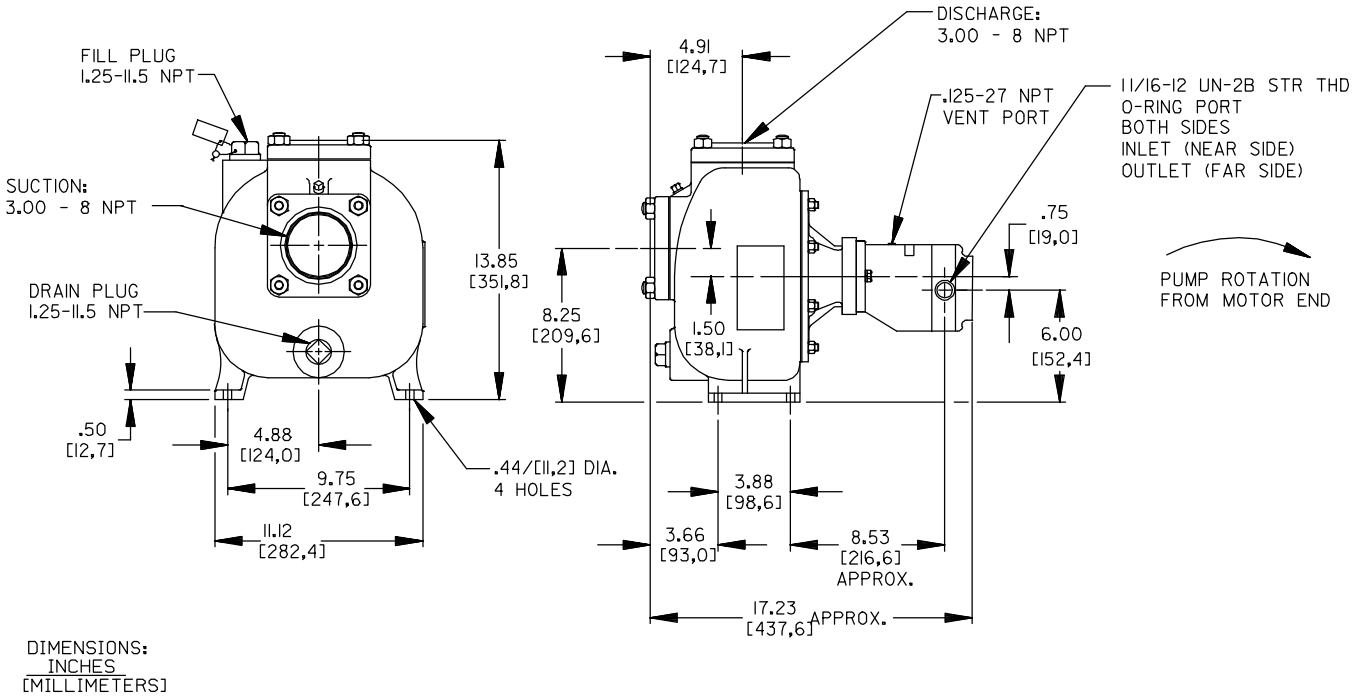
Printed in U.S.A.

Specification Data

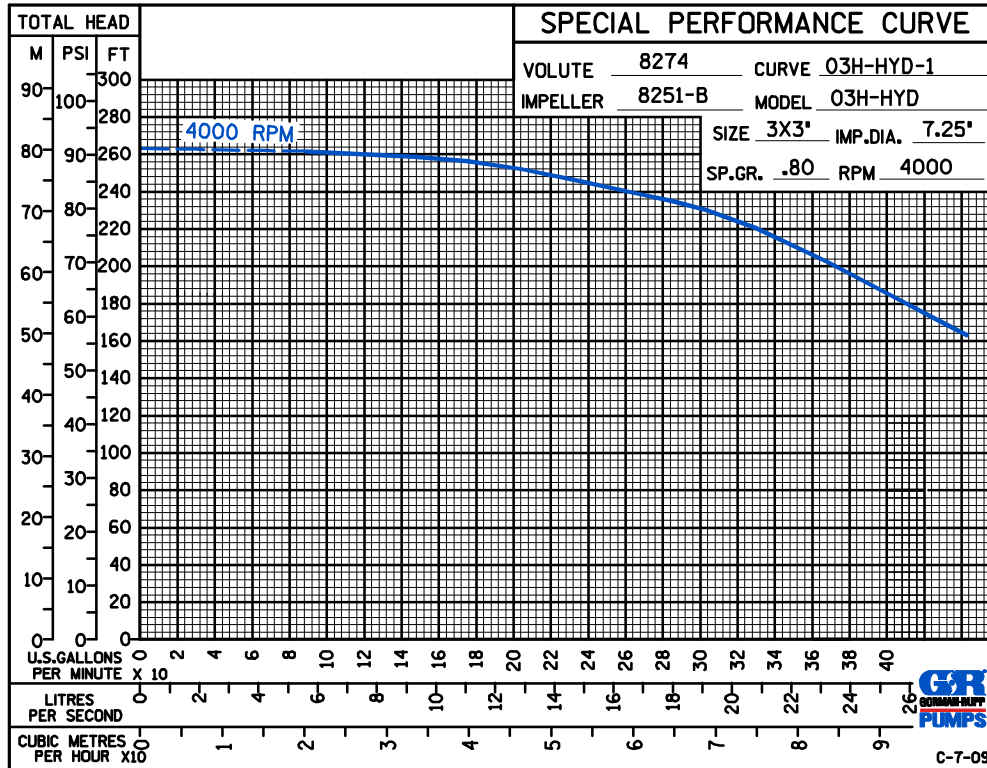
SECTION 110, PAGE 605

APPROXIMATE
DIMENSIONS and WEIGHTS

NET WEIGHT: 63 POUNDS (28,6 KG)
SHIPPING WEIGHTS: 73 POUNDS (33,1 KG)
EXPORT CRATE: 6.1 CU. FT. (0,17 CU. M.)



PERFORMANCE
BASED ON
PETROLEUM



THE GORMAN-RUPP COMPANY • MANSFIELD, OHIO

GORMAN-RUPP OF CANADA LIMITED • ST. THOMAS, ONTARIO, CANADA

Specifications Subject to Change Without Notice

Printed in U.S.A.

