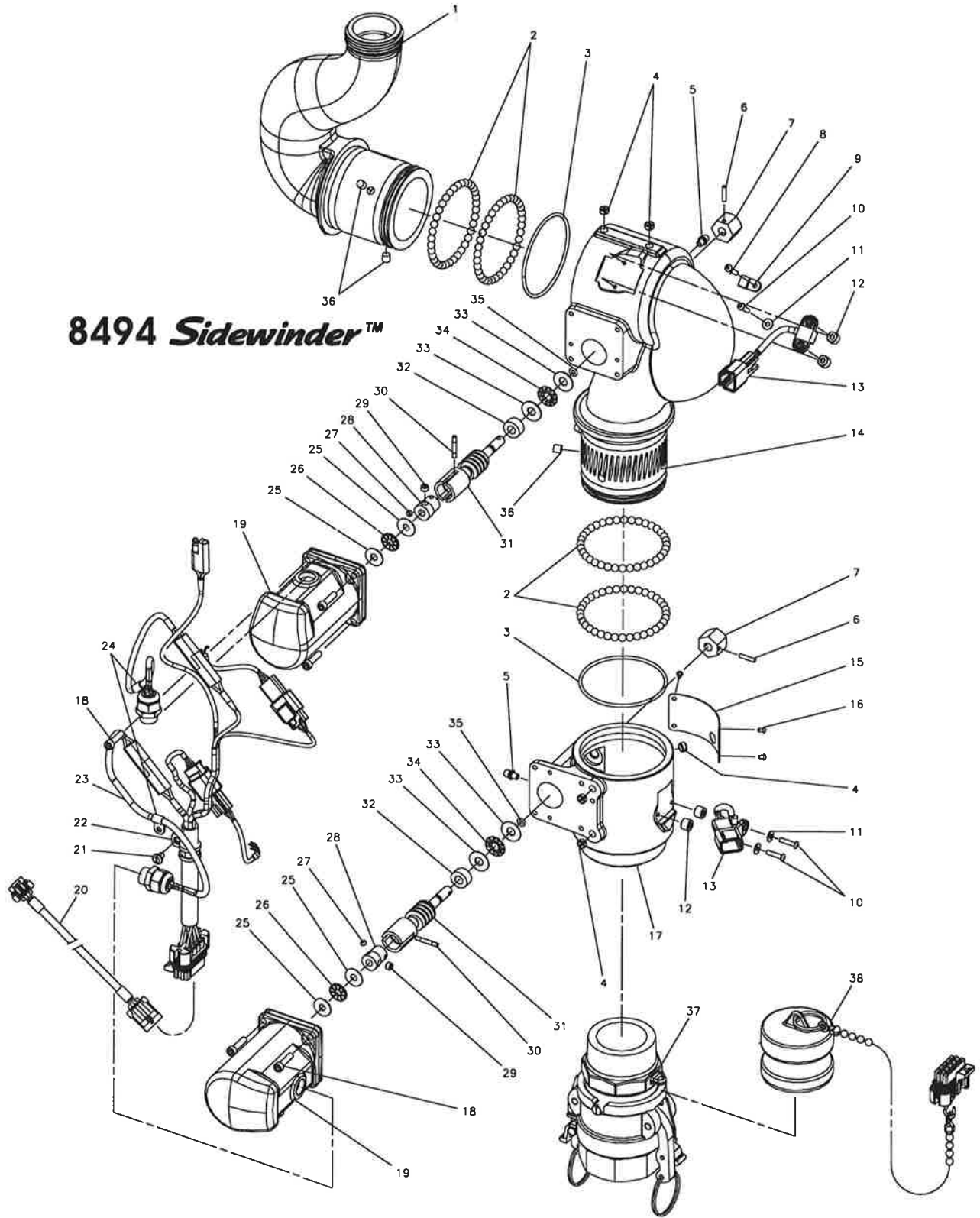


8494 Sidewinder™



8494 SIDEWINDER MONITOR PART LIST			
IND.#	PART #	QTY	PART DESCRIPTION
1	17908001	1	MONITOR OUTLET BODY
2	15027000	144	BALLS-0.250 DIA. SS (36 PER RACE)
3	57502000	2	O-RING AS 568-148F (2.737 ID X 0.103 C/S)
4	63687000	5	SET SCREW 0.312-18 X 0.187 LG BLK NYLON
5	31011000	2	GREASE FITTING (SS)
6	51248000	2	ROLL PIN 0.125 DIA. X 0.625 LG SS
7	47652001	2	OVER-RIDE NUT
8	65140000	1	SCREWS #6-32 X 0.750 LG SOC BTN HD SS
9	23572000	1	CLAMP LOOP (NYLON) 0.140 HOLE
10	65139000	3	SCREWS #6-32 X 0.625 LG SOC BTN HD SS
11	71176000	3	WASHER - #6 SS
12	65572000	4	SPACER - SENSOR
13	65104000	2	POSITION SENSOR
14	18219001	1	MONITOR INLET BODY
15	44339000	1	SERIAL NO./IDENTIFICATION PLATE
16	61215100	4	DRIVE SCREW #4 X 0.187 RND HD SS
17	17975001	1	MONITOR BASE (2.0 NPT FEMALE)
18	64072000	8	CAP SCREWS #10-32 X 0.500 LG SOC HD SS
19	81119001	2	MOTOR ASSY (12 VDC SLOW)
19	81147001	2	MOTOR ASSY (12 VDC FAST)
19	81207001	2	MOTOR ASSY (24 VDC SLOW)
19	81240001	2	MOTOR ASSY (24 VDC FAST)
20	36791200	1	QUICK CONNECT HARNESS EXTENSION
21	63797000	1	SCREW #10-32 X 0.250 LG SLT PAN HD SS
22	23570000	1	CLAMP LOOP CUSHIONED
23	36833100	1	MONITOR CONTROL HARNESS
24	23571000	2	CLAMP LOOP (NYLON) 0.210 HOLE
25	71515000	4	THRUST WASHER 1/4
26	17701000	2	THRUST BEARING 1/4
27	65201000	2	SET SCREW #10-32 X 0.125 LG SOC HD SS
28	20991001	2	COUPLING
29	65219000	2	SET SCREW #10-32 X 0.187 LG SOC HD SS
30	51071000	2	SOLID PIN (DRIVE LOCK E) 0.125 DIA X 0.875LG
31	63935001	2	WORM SHAFT SS
32	63601001	2	SPACER
33	71516000	4	THRUST WASHER 5/16
34	17702000	2	THRUST BEARING 5/16
35	57380000	2	O-RING AS 568-008 (0.176 ID X 0.070 C/S)
36	46054000	4	MAGNETS
OPTIONAL QUICK CONNET CPLG ASSY			
37	81342001	1	QUICK CONNECT COUPLING
OPTIONAL FOR USE WITH P/N 81342001 QUICK CONNECT ADAPTER			
38	81342051	1	DUST PLUG ASSY WITH CHAIN